

Logan Finch Studio Gallery





Logan Finch Studio Gallery



Logan Finch

Logan Finch is a very passionate photographer/videographer. He spends much of his time traveling around the world, living through his camera lens. Wherever he goes, he enjoys meeting new people and finding interesting subjects for his work. Stylish and tech savvy, he also has a penchant for utilizing the latest devices. In terms of business connections, he works with many celebrities and people in the entertainment industry. His work fuses glamour, nature and social issues. He usually starts his day on his lounge bed, holding a steaming cup of espresso, and viewing the news and his work schedule on the flat-screen wall display. After his morning ritual, he climbs ladder to video conference with some clients and he selects and edits photos and videos on a transparent touch screen board in his working space. Sometimes, he converts the working space into a photo studio. Social gatherings are held almost every weekend in the social area inside the studio and outside space.

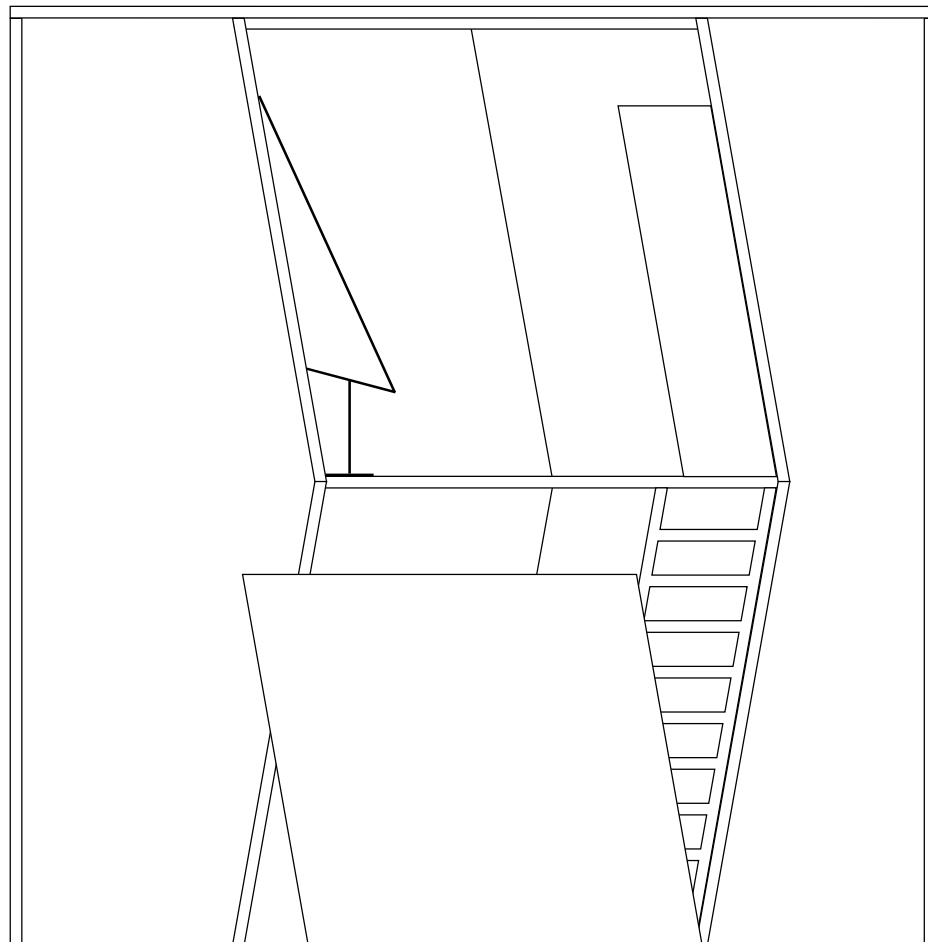




Logan Finch Studio Gallery

The Space - Immerse, Sleek, Future

Logan Finch Studio Gallery is a modern and dynamic space, which functions as a working studio, gallery and living space. With its 80-degree slant, the whole building echoes the logo. The gallery is open to public, but the working studio on the second floor is a private space. The studio is covered by two layers of transparent display glass. It features three different modes: clear, display, and private. Expensive equipment is located in the working studio: a touch-screen wall located on the south side of the building and the wall-display screens placed inside the social area on the north side of the building; they allow the visitors to immerse in the amazing works of Mr. Finch. The working, living and gallery spaces are integrated seamlessly.

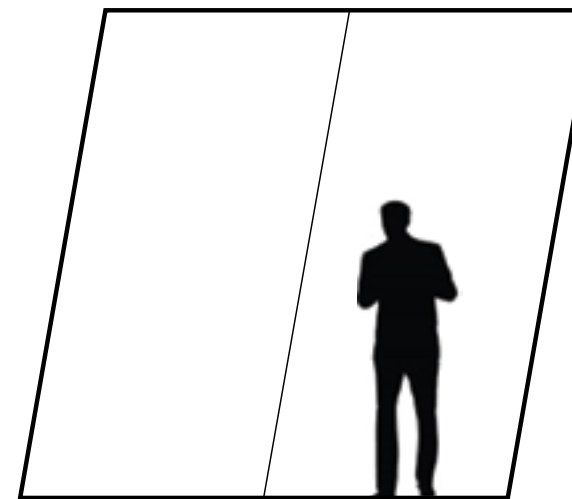


The Technology

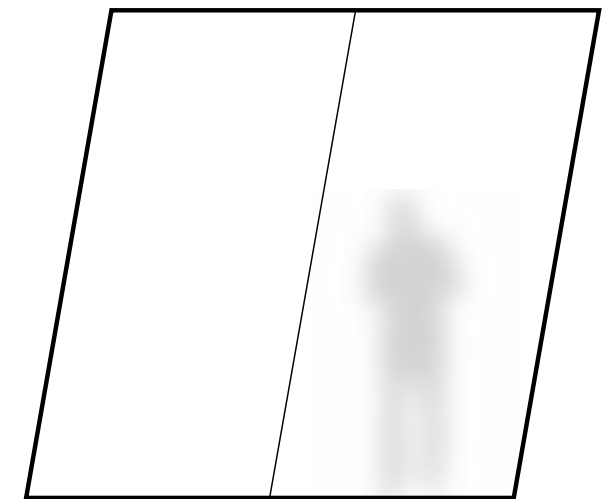
Transparent Display Glass



DISPLAY MODE



CLEAR MODE



PRIVACY MODE



Logan Finch Studio Gallery

Inspiration - Exterior





Logan Finch Studio Gallery

Inspiration - Interior



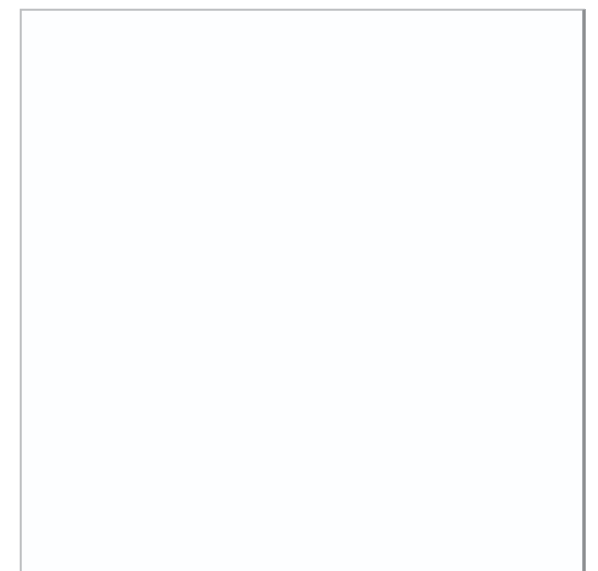


Logan Finch Studio Gallery

Materials



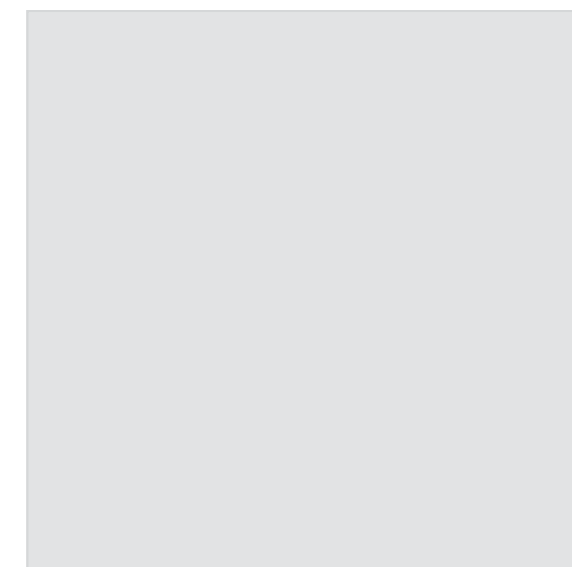
Smooth concrete floor



DuPont™ Corian® designer white panel
for the exterior wall



Samsung's First All-in-One Transparent Display
Samsung's 22-inch transparent display (NL22B) is a new type of product, available as an all-in-one product showcase, launching a new era of creative display in digital retail design. The thin LCD panel on the front of the transparent display allows images and animations to dynamically interact with the merchandise inside the showcase while still enabling passers-by to view the product.

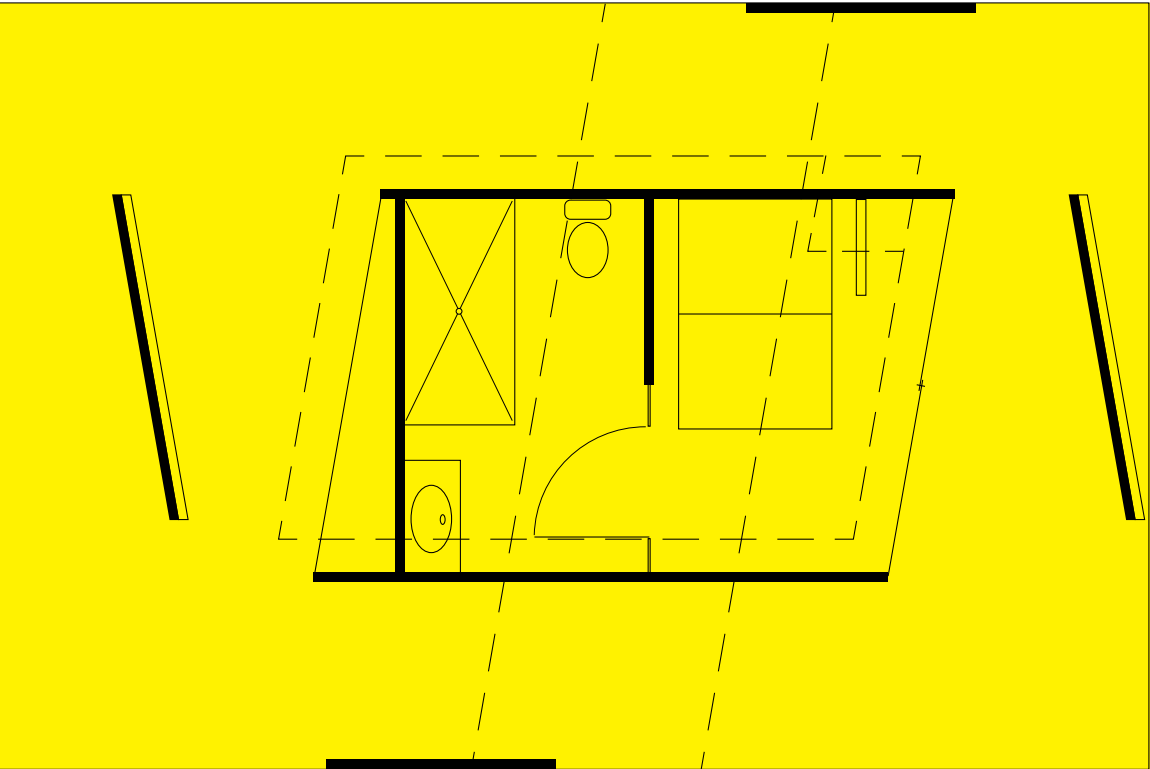


Transparent Display Glass

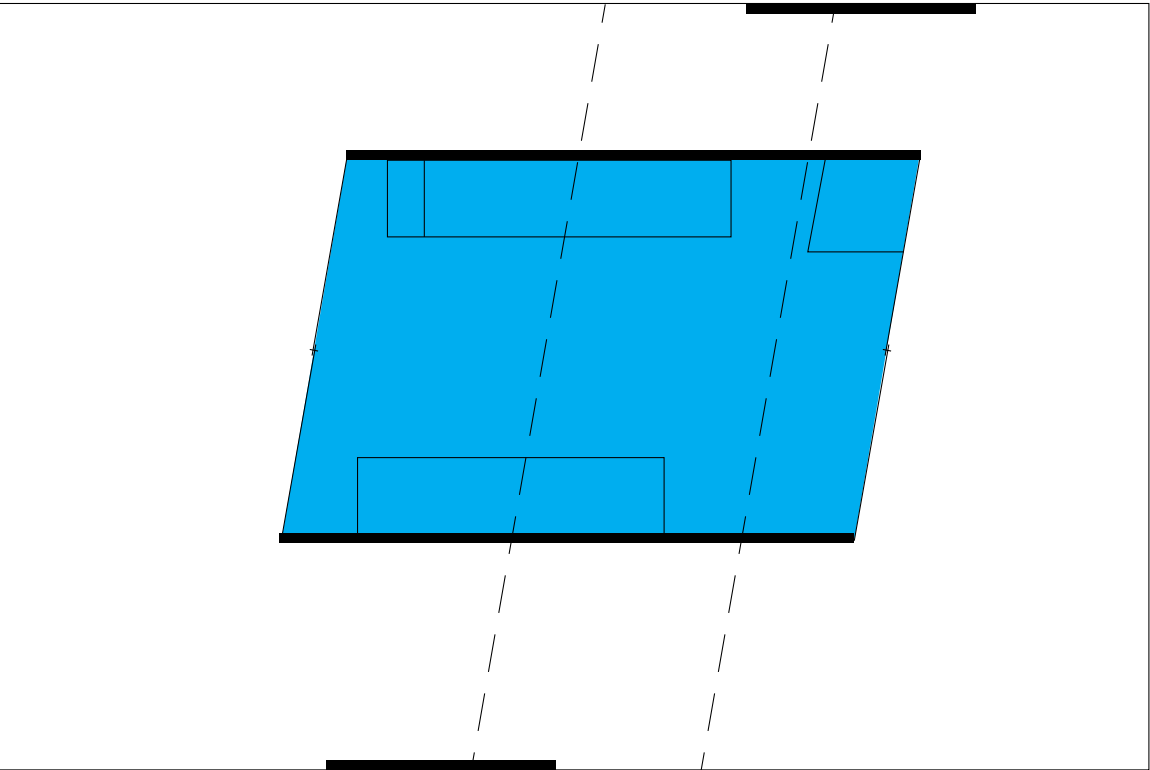


Logan Finch Studio Gallery

Private Public



1st floor

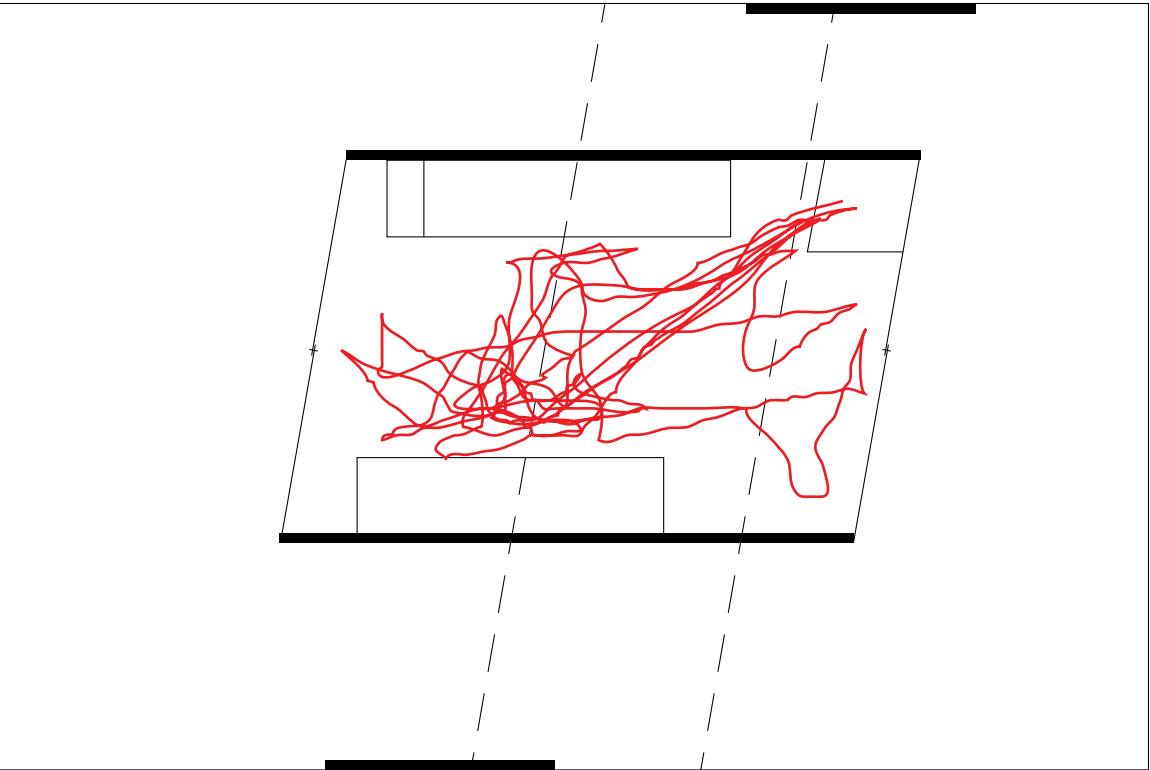


2nd floor

LF Traffic Flow Public Traffic Flow

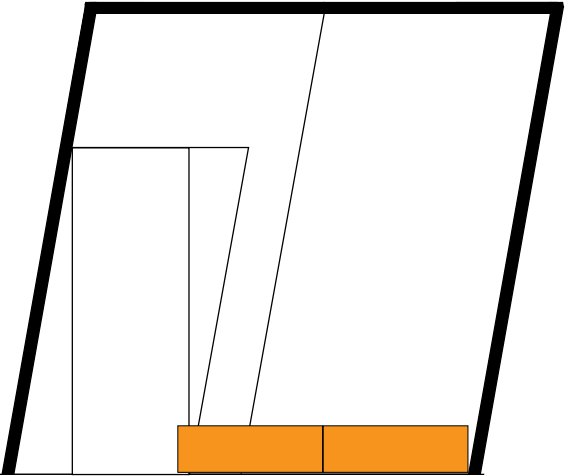


1st floor

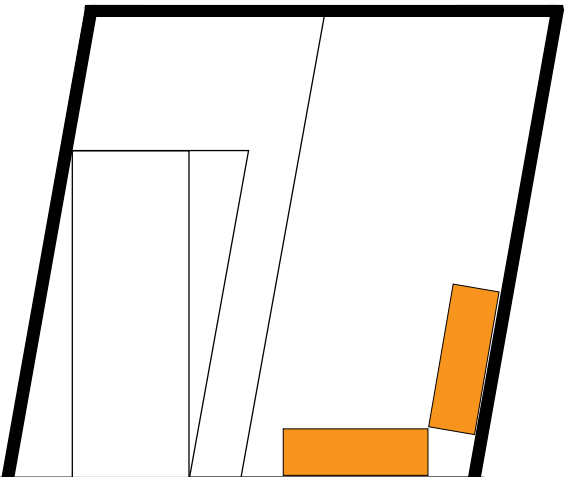


2nd floor

Lounge Bed on First Floor



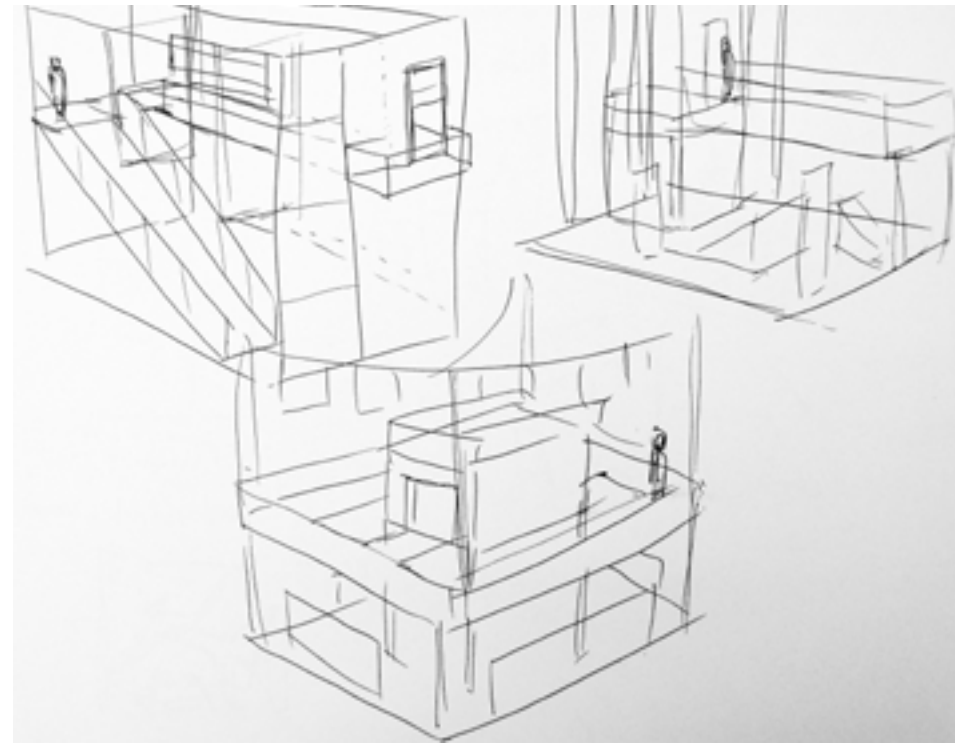
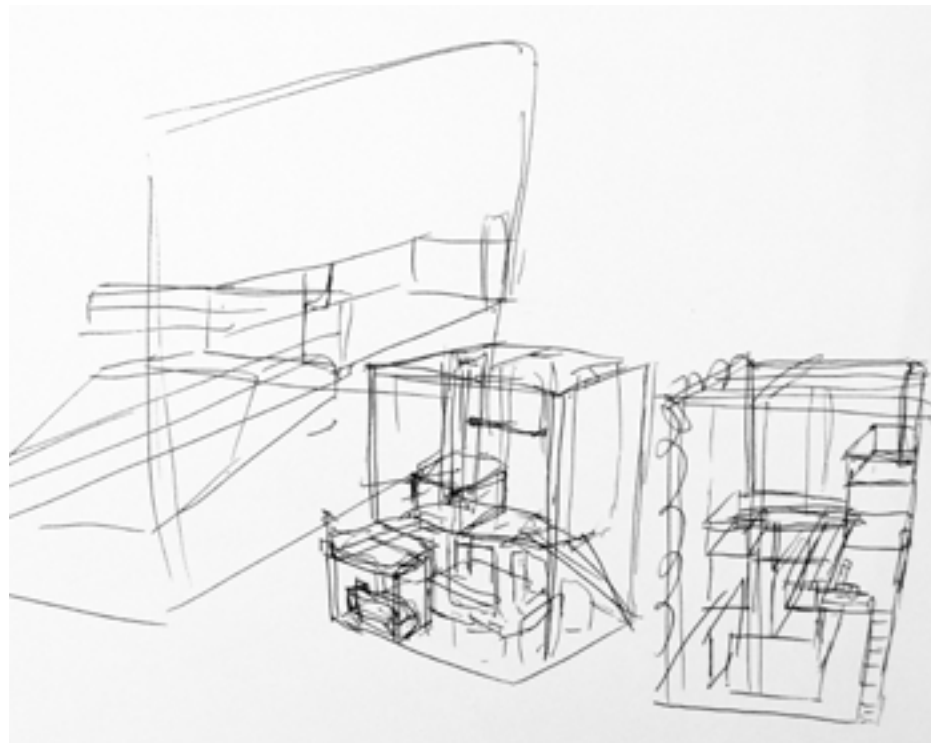
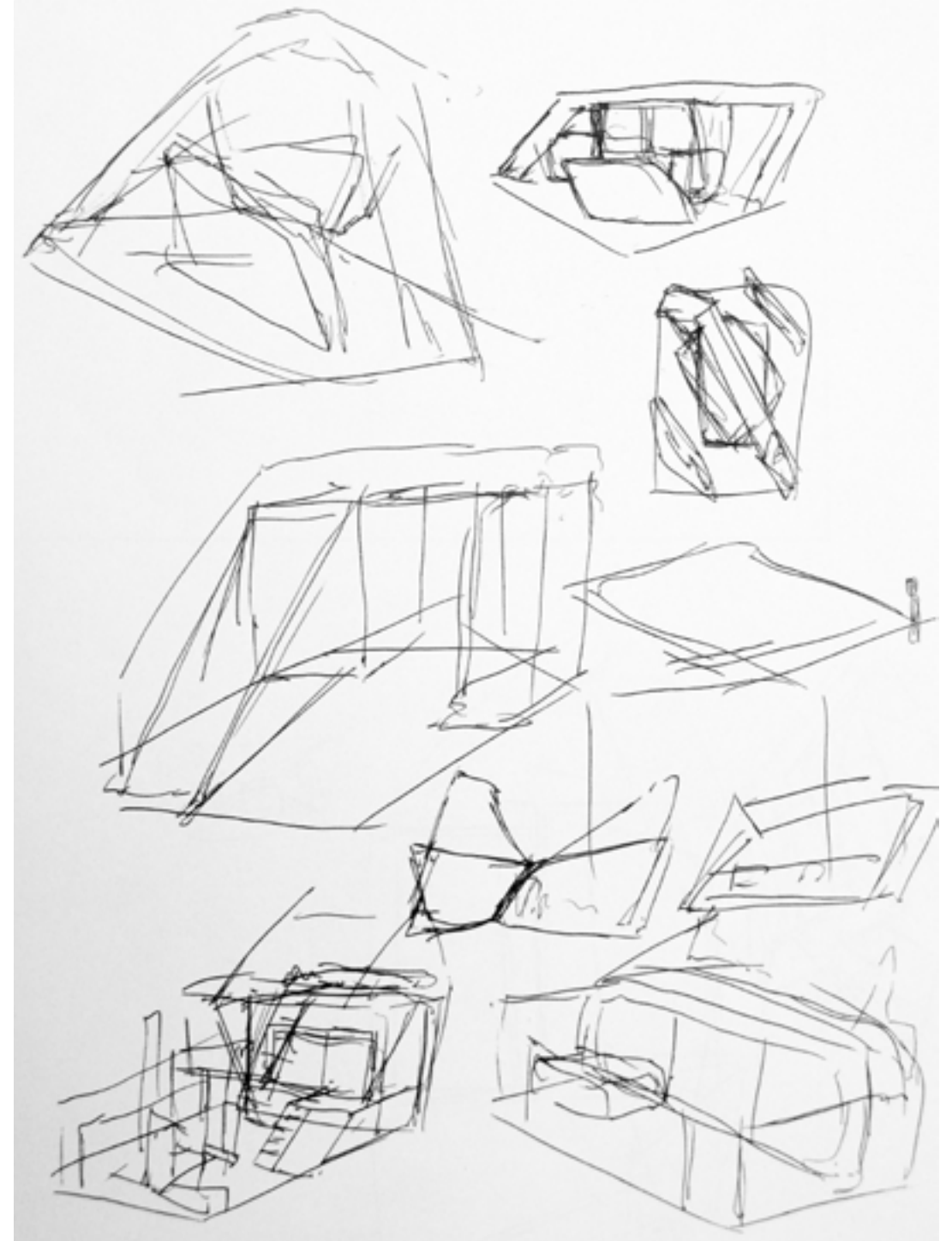
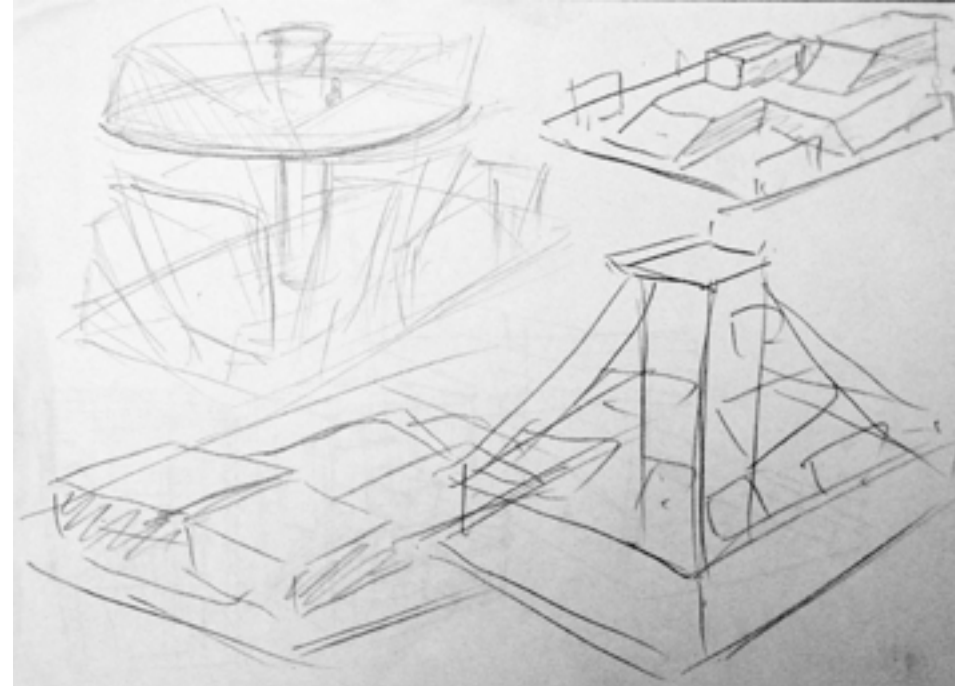
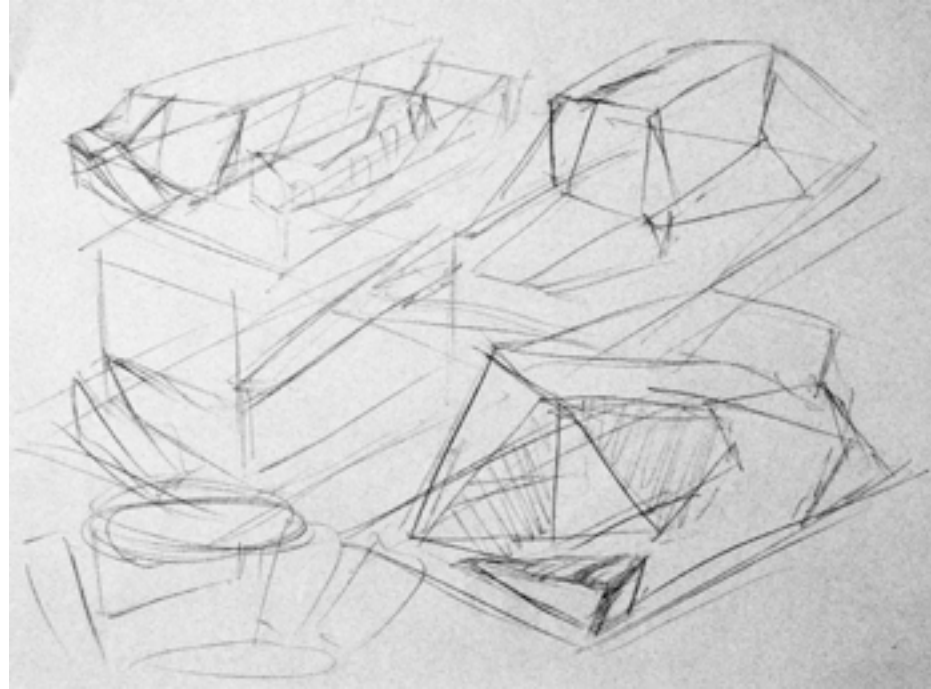
Bed



Lounge chair

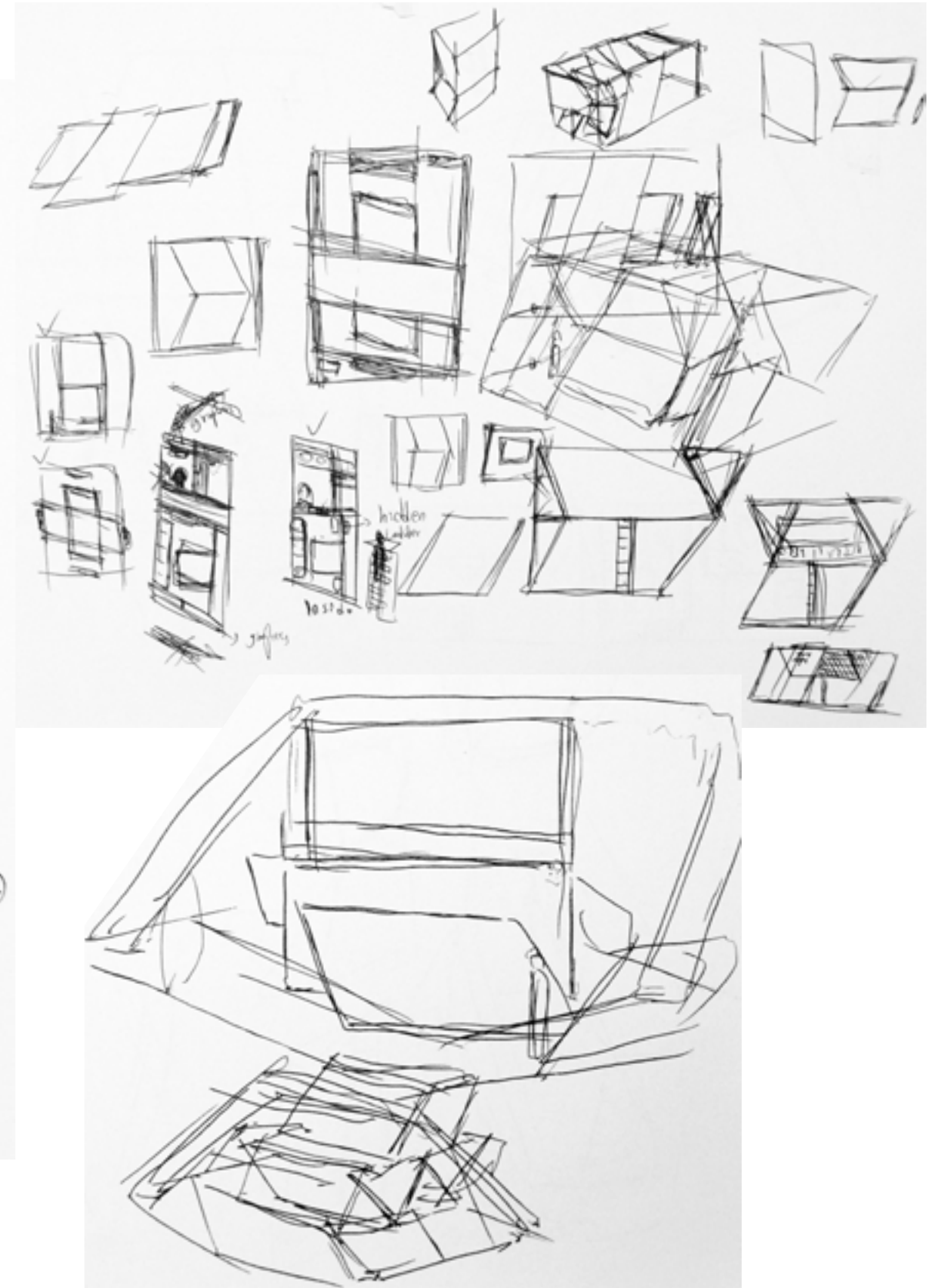
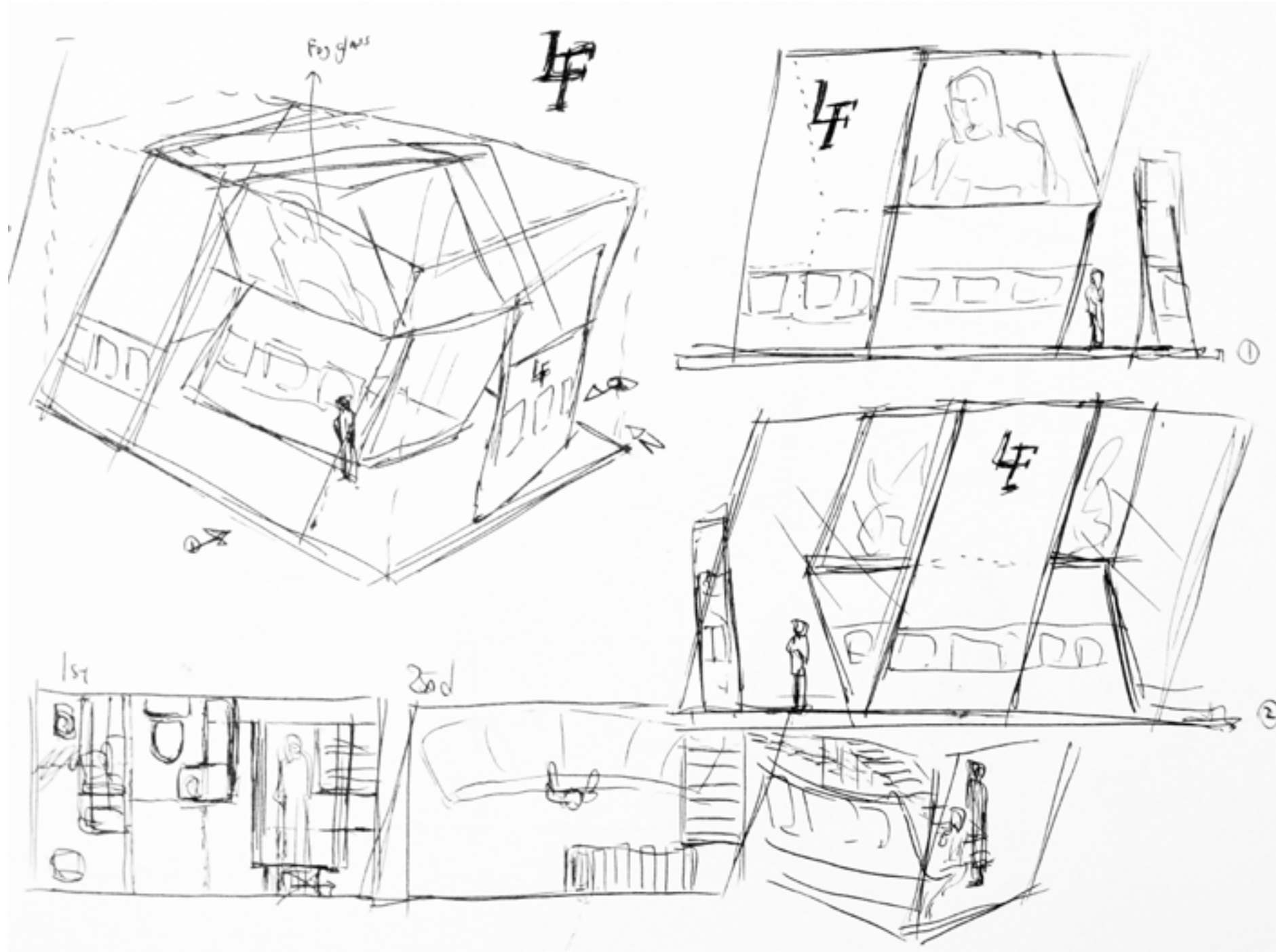


Logan Finch Studio Gallery



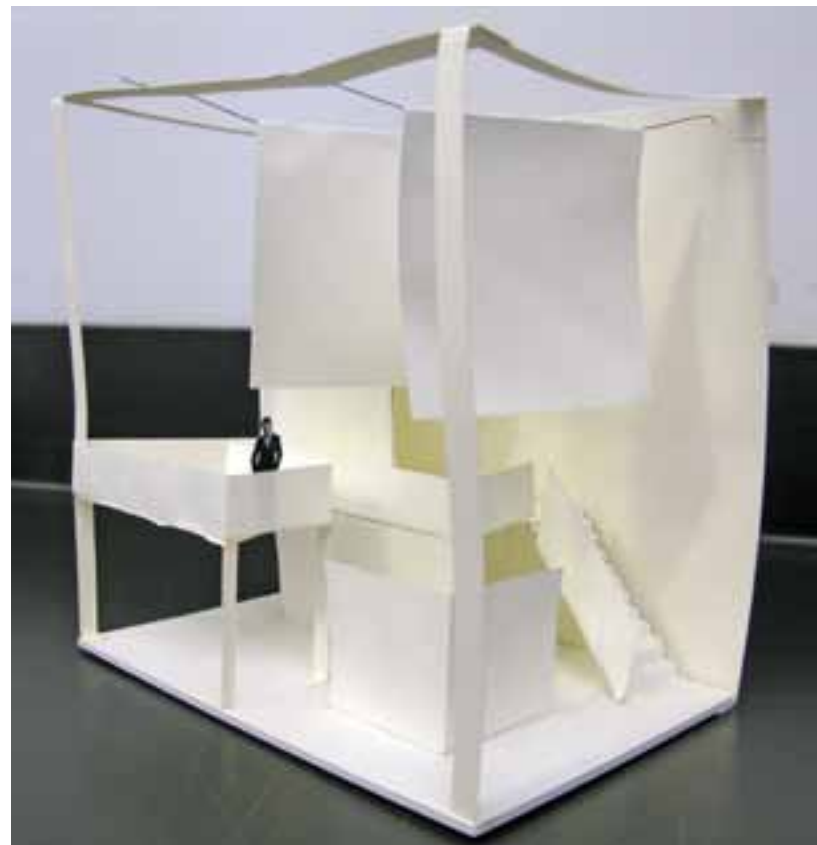
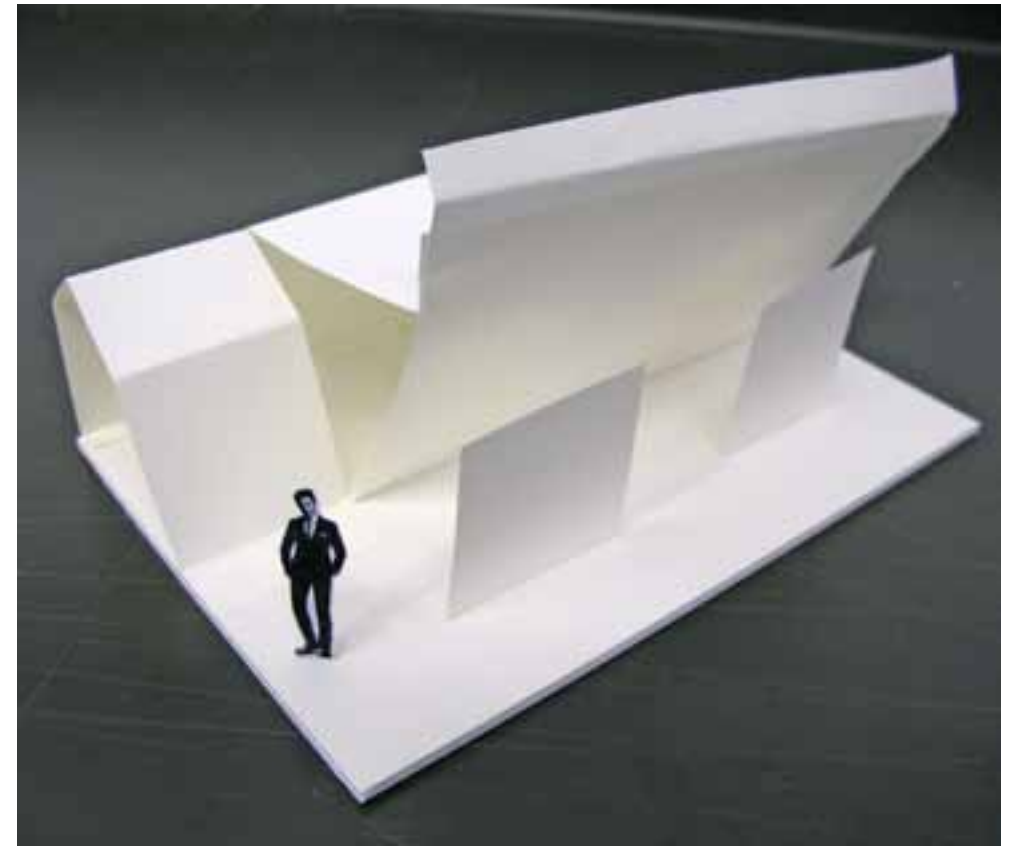


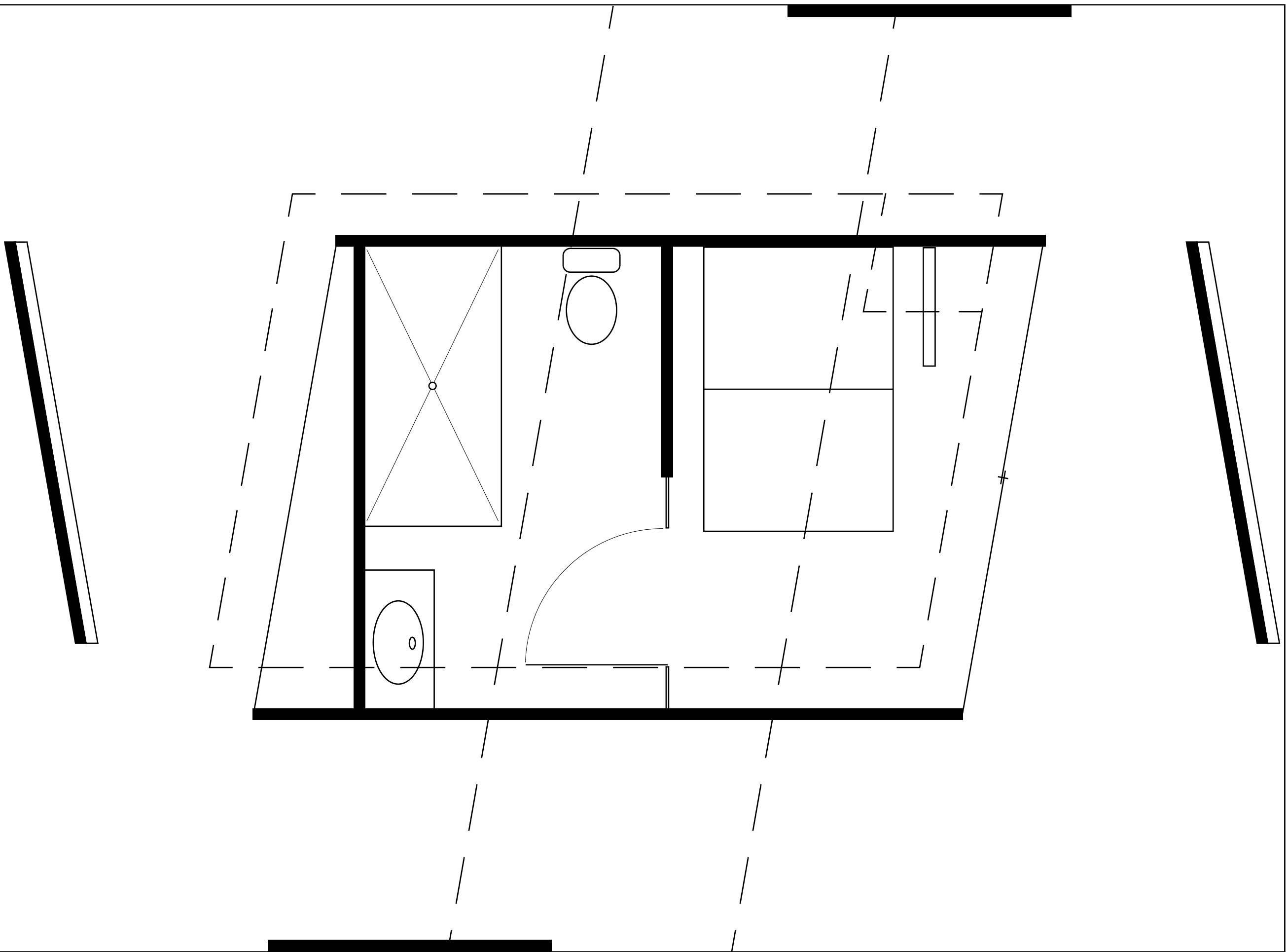
Logan Finch Studio Gallery





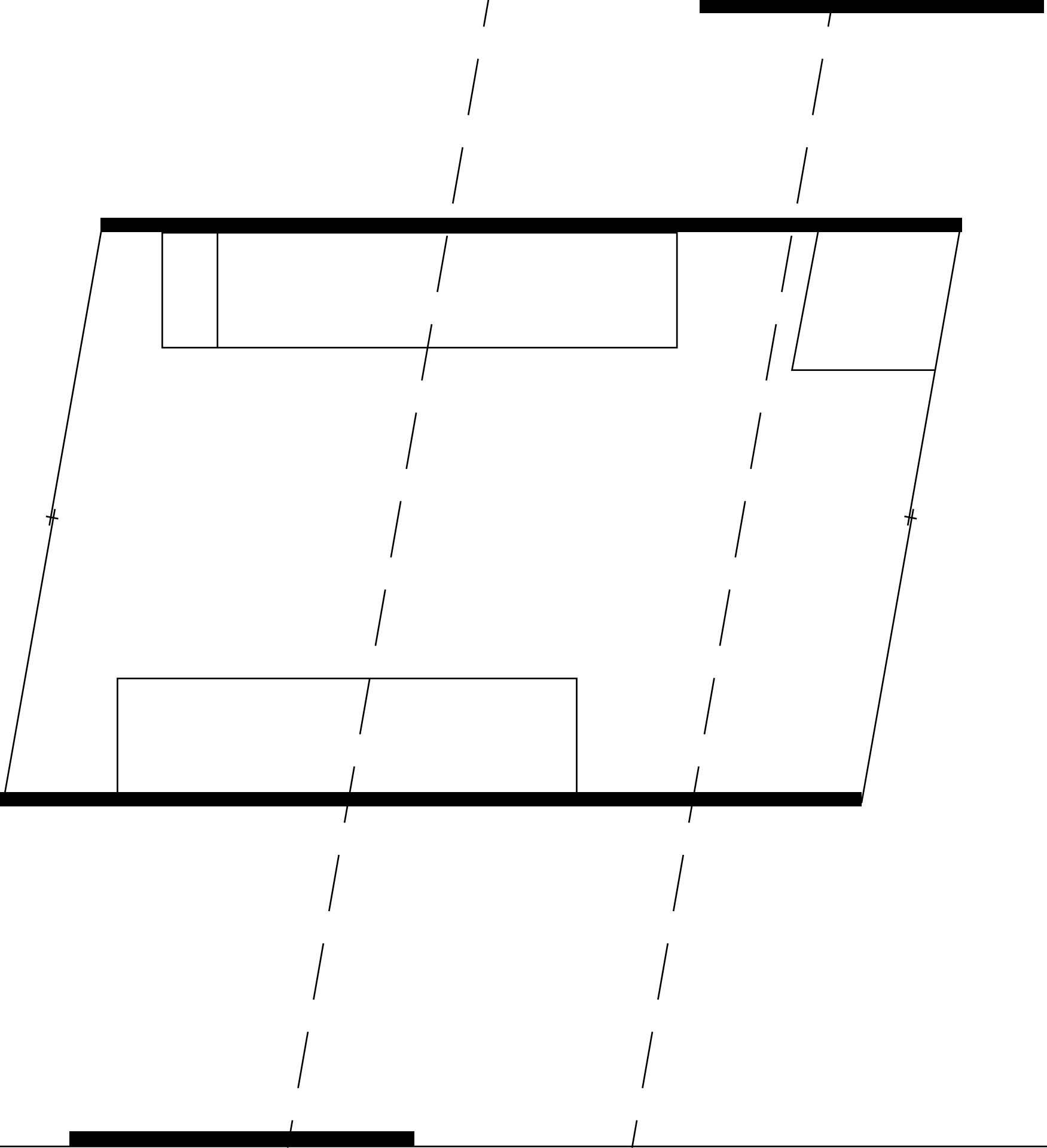
Logan Finch Studio Gallery





FIRST FLOOR PLAN SCALE 1/2=1-0

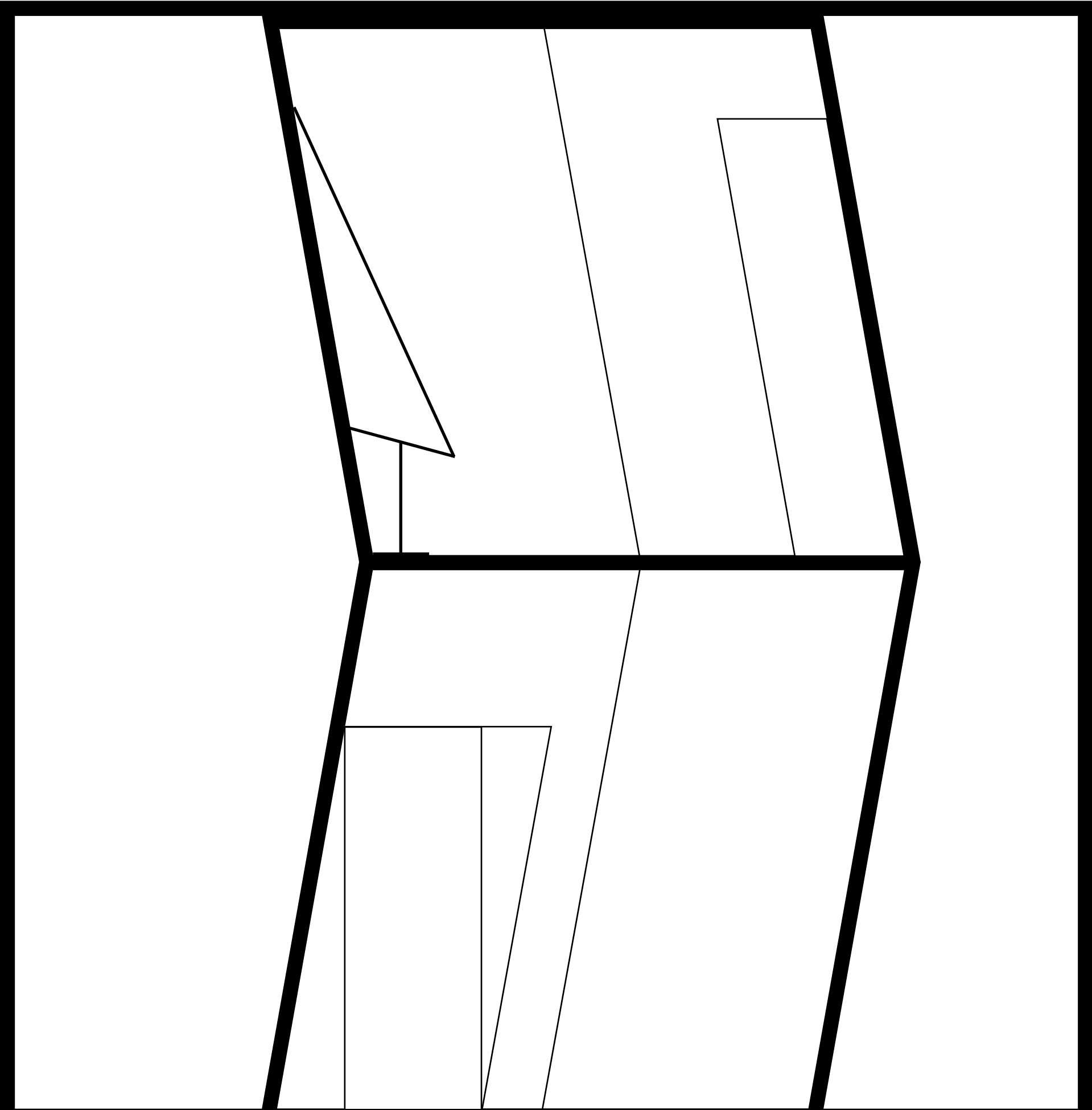




SECOND FLOOR PLAN

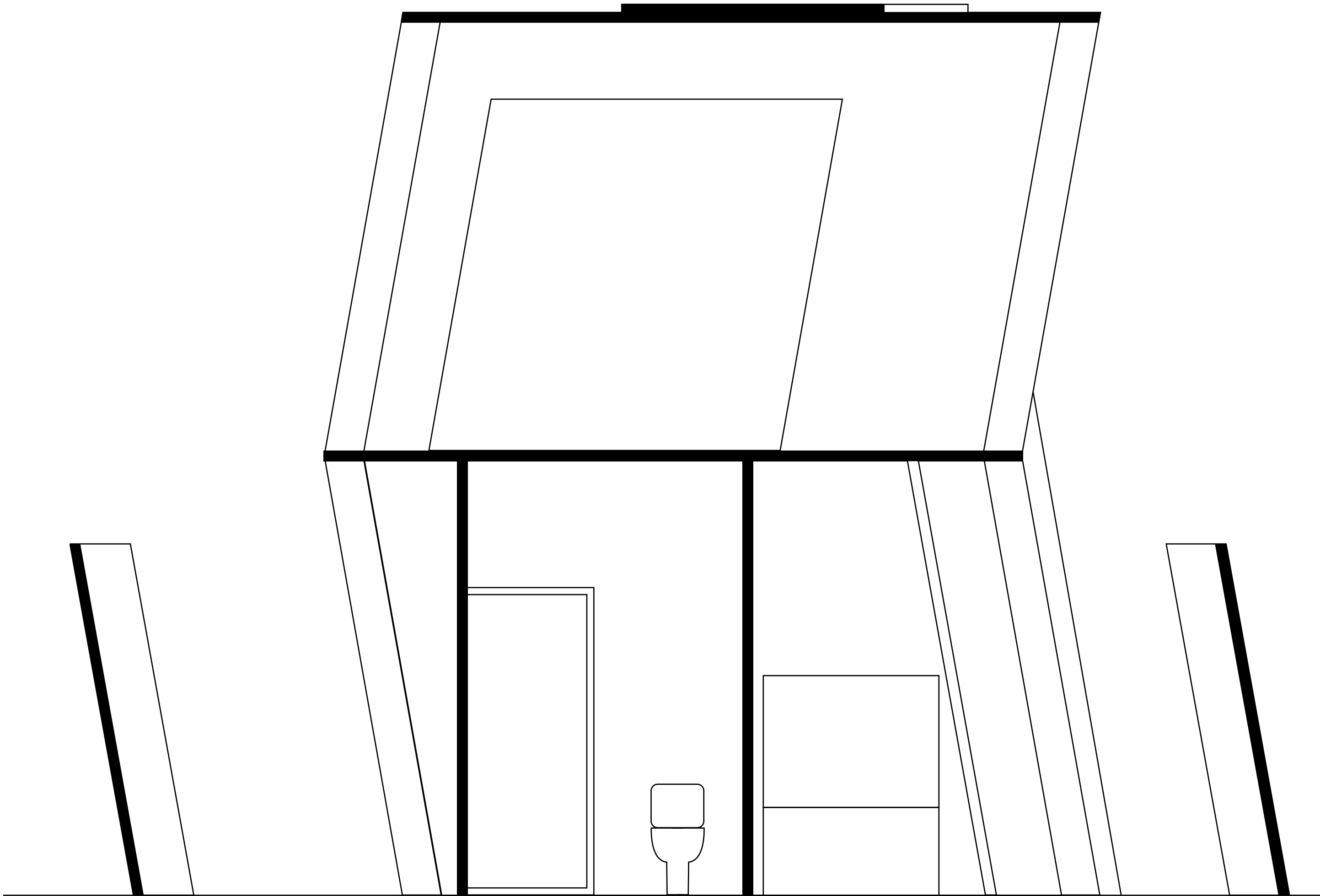
SCALE 1/2=1-0





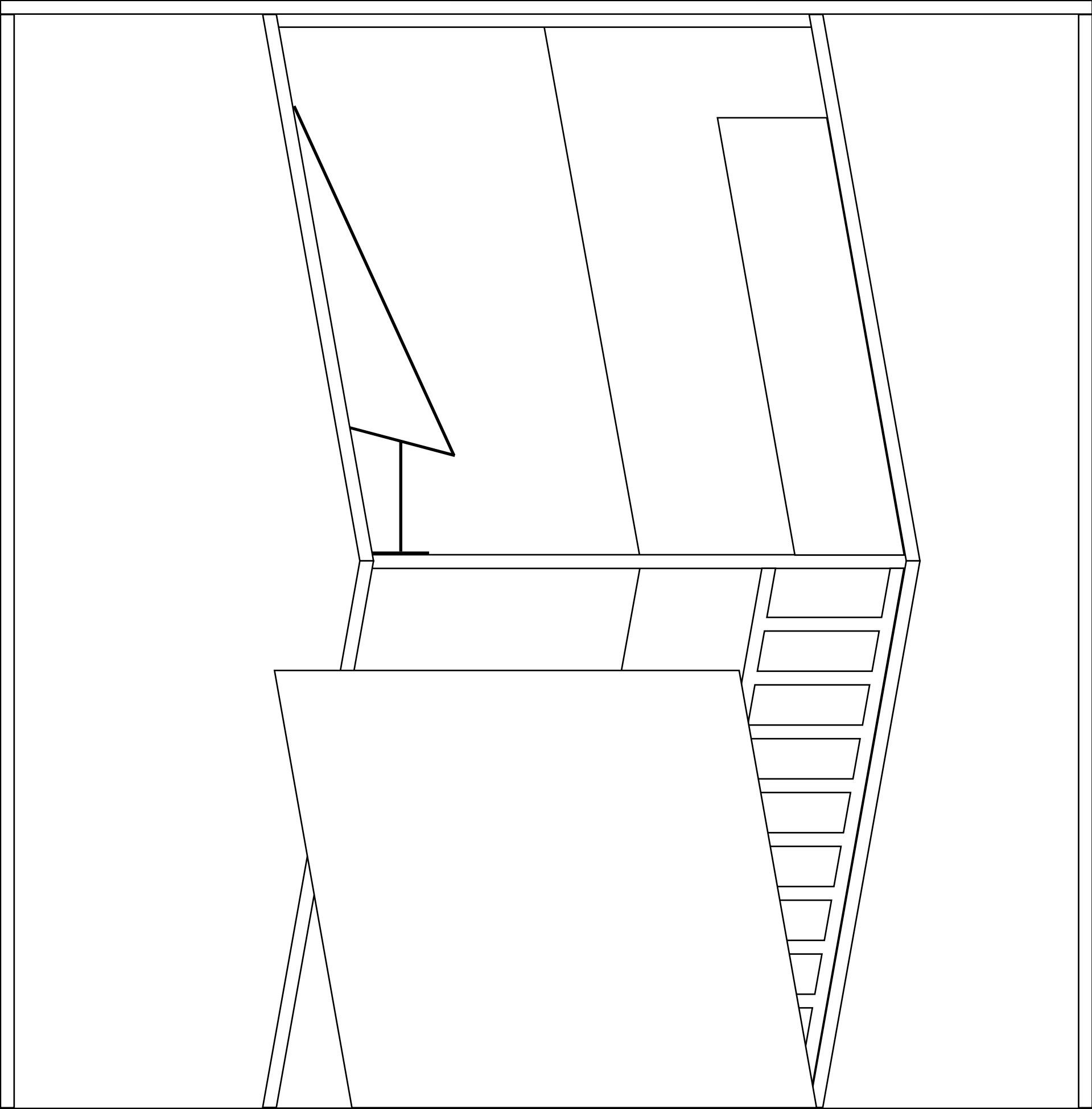
SECTION A

SCALE 1/2=1-0



SECTION B

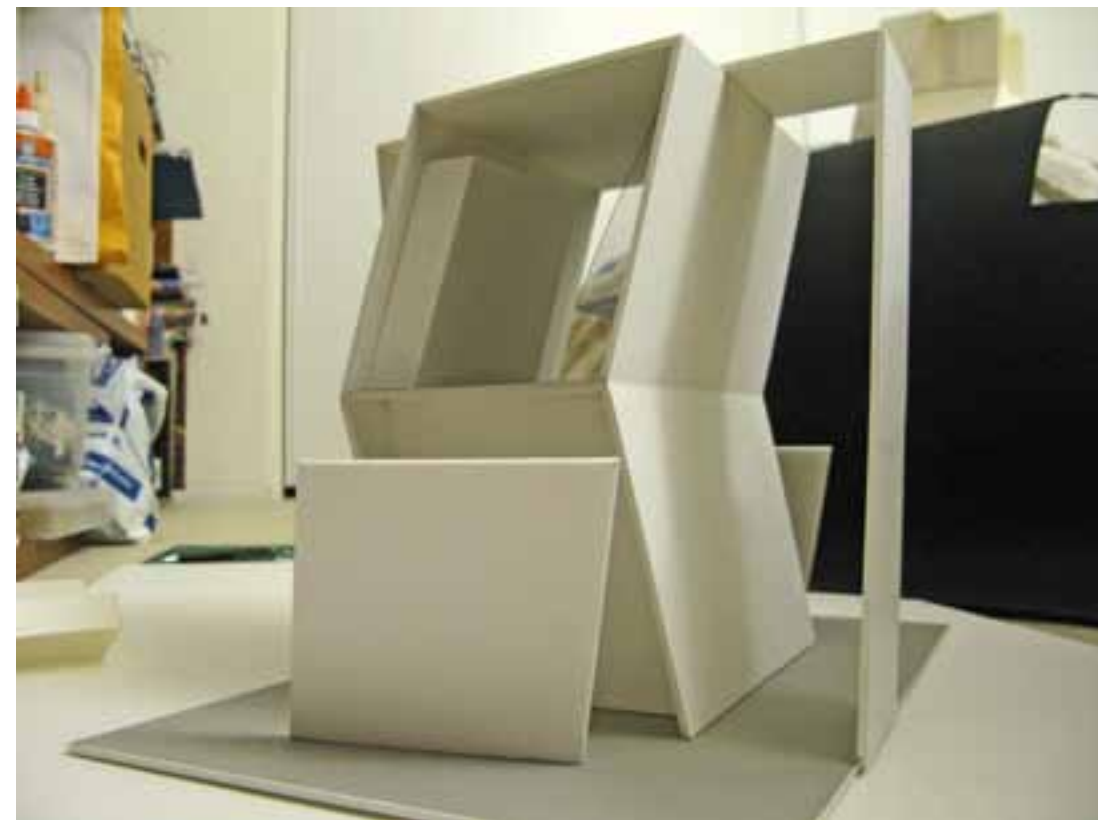
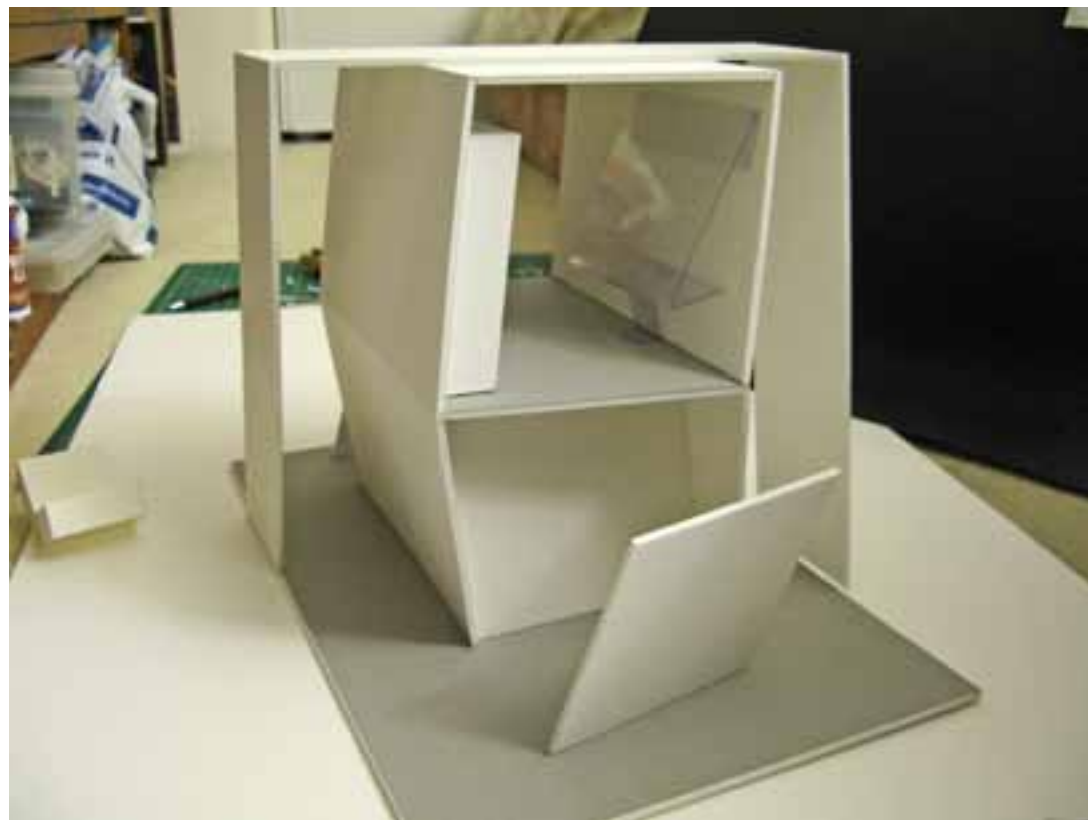
SCALE 1/2=1-0



FRONT ELEVATION SCALE 1/2=1-0



Logan Finch Studio Gallery





Logan Finch Studio Gallery

